

ADAM x



EOFY SPECIAL OFFERS!
May - June 2026

EOFY EQUIPMENT OFFERS - UPGRADE & SAVE

**EOFY
SALE**



EASE-IN-SHIELDS™
Protective Loupe Inserts

**15%
OFF!**

**VALO
GRAND**



VALOX
BROADBAND LED CURING LIGHT



Curing & Diagnostic lenses

Scan for product information and videos



Each product promotion or discount must be used separately and cannot be combined with other offers*

• Call us: 1800 29 09 29 • info.anz@ultradent.com • www.ultradent.com.au •

© 2026 Ultradent Products, Inc. All Rights Reserved.



Ultradent ANZ



@ultradentanz

EOFY CONSUMABLE OFFERS

UltraSeal XT™ hydro⁺ | UltraSeal XT™ plus⁺

UltraSeal XT Hydro and **UltraSeal XT Plus** are light-cured, radiopaque, fluoride-releasing pit and fissure sealants with a highly filled resin for increased wear resistance. Their thixotropic properties allow them to flow into pits and fissures while staying in place, ensuring complete coverage and long-lasting protection—ideal for moist (Hydro) and dry-field (Plus) conditions.

EOFY
SALEBUY 3
GET 1
FREE!

EOFY VALUE FEATURED OFFER

FREE PEAK UNIVERSAL BOND (#4543) WITH EVERY PURCHASE OF PORCELAIN ETCH KIT (405-AU)

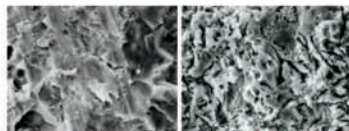
EOFY
SALEUltradent™ Porcelain Etch and Silane
Etchants

Porcelain Etch and **Silane** work together to create a strong, reliable bond—using a buffered hydrofluoric acid etch for controlled surface preparation, followed by silane to enhance chemical adhesion. When used together with a bonding resin, this protocol has been shown to deliver the highest bond strength to porcelain.

Paired with **Peak™ Universal Bond**, a proven **gold standard in adhesive performance**, the system provides consistent, high-strength bonding across a wide range of indications—giving clinicians confidence in both durability and long-term outcomes.



Porcelain Surface Before and After Porcelain Etch



Diamond-cut porcelain surface.
(Photo courtesy of
Dr. Cornelis Pameijer)

Same porcelain surface following a
90-second etch with Ultradent
Porcelain Etch.
(Photo courtesy of
Dr. Cornelis Pameijer)

Scan for product
information and videos

Each product promotion or discount must be used separately and cannot be combined with other offers*

• Call us: 1800 29 09 29 • info.anz@ultradent.com • www.ultradent.com.au •

© 2026 Ultradent Products, Inc. All Rights Reserved.



Ultradent ANZ



@ultradentanz

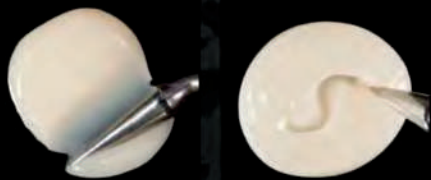
Forma™

ZIRCONIA NANO-HYBRID COMPOSITE

COMING
SOON



EXCLUSIVELY
NEW & NOW IN
AUSTRALIA



- Smooth and easy to sculpt
- Does not stick to instruments
- Won't slump out of place

Applicable to kits & single units

WHERE STRENGTH MEETS SIMPLICITY.

FORMA composite offers natural tooth color with just one body shade (OneStepColor) or for restorations that require layering, there are dentin, enamel, and effect shades with different degrees of translucency. Its formula, consisting of zirconia and ytterbium trifluoride, allows all shades to offer excellent optical and mechanical properties: translucency, opacity, fluorescence, and strength.

OneStepColor

FORMA™ composite shades and kits

← + Opacity - →

| Dentine | Body | Enamel | Effect Colors |
|----------------------|---------|---------|---------------|
| ● A1D | ● A1B | ● A1E | ● Incisal |
| ● A2D | ● A2B | ● A2E | ● Transparent |
| ● A3D | ● A3B | ● A3E | ● Opaquer |
| | ● A3.5B | ● A3.5E | |
| | ● A4B | ● A4E | |
| | ● B1B | ● B1E | |
| | ● B2B | ● B2E | |
| | ● C1B | ● C2E | |
| | ● C2B | | |
| Bleach Shades | ● BL1 | | |
| ● WD | ● BL2 | | |
| | ● WB | ● WE | |
| | ● XWB | ● XWE | |

FORMA KIT BODY SHADES

- 1 × A1B, 2 × A2B, 1 × A3B, 1 × A3.5B



FORMA KIT - EVERYDAY SHADES

- 1 × A1B, 1 × A2B, 1 × A3B, 1 × A2E, 1 × Opaquer



FORMA KIT - BLEACH SHADES

- 1 × BL1, 1 × BL2, 1 × WE, 1 × WB, 1 × WD



FORMA Refill Packet - 1 x 4 g syringe

Scan for product information and videos



Each product promotion or discount must be used separately and cannot be combined with other offers*

• Call us: 1800 29 09 29 • info.anz@ultradent.com • www.ultradent.com.au •

© 2026 Ultradent Products, Inc. All Rights Reserved.



Ultradent ANZ



@ultradentanz